

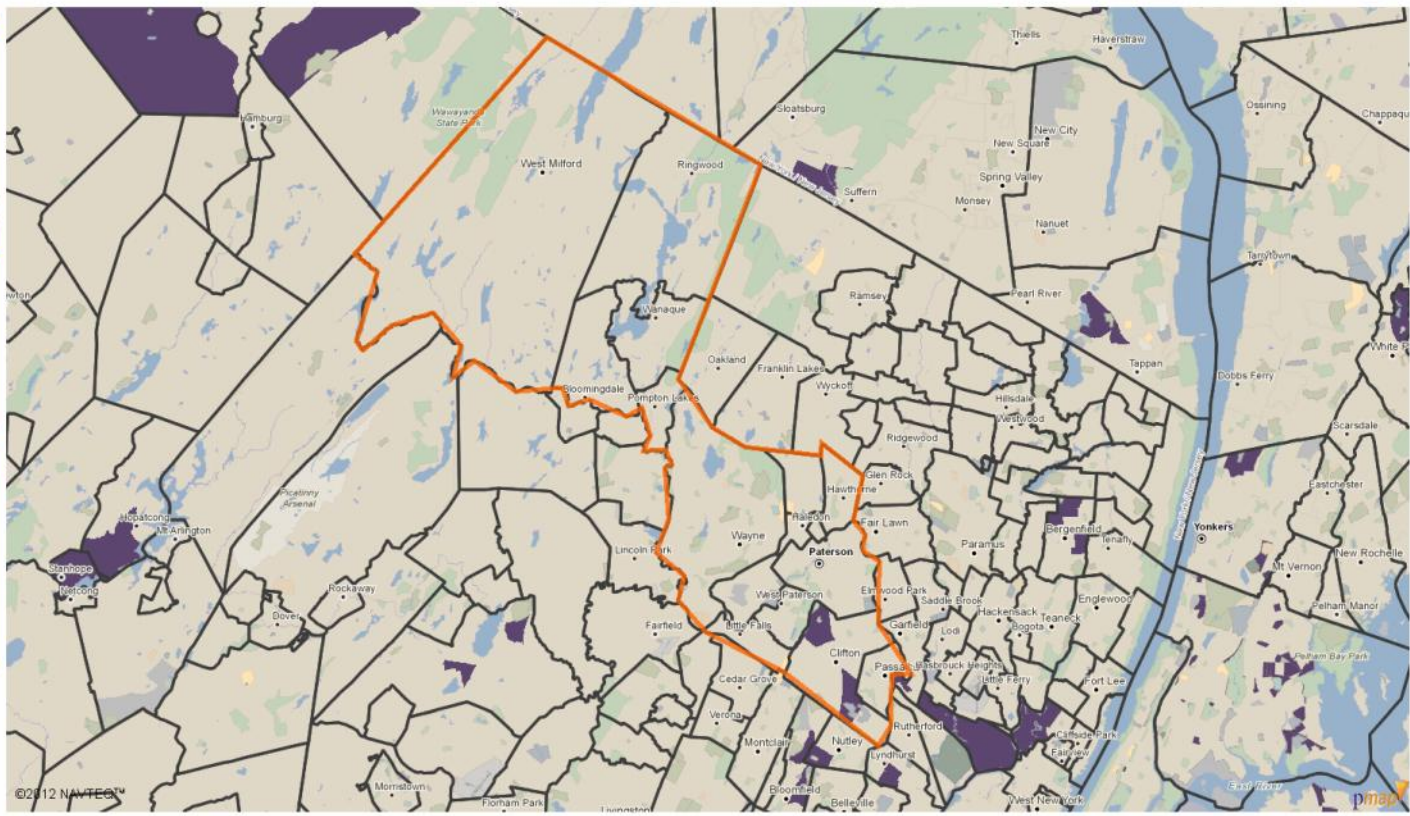


Custom PolicyMap Analytic of Passaic

Data Layer 1
Estimated per capita income between 2005-2009.
Range: \$0 - \$33,962
Shaded by: Census Tract
Source: Census

Data Layer 2
Estimated percent of all renters who are cost burdened between 2005-2009.
Range: 0% - 33.93%
Shaded by: Census Tract
Source: Census

Data Layer 3
Percent of population that received Food Stamps in July 2008.
Range: 0.18% - 51.1%
Shaded by: County
Source: SAIPE & Census Pop Estimates



Purple areas on the map meet all criteria below:
Data Layer 1: Estimated per capita income between 2005-2009. Range: \$0 - \$33,962.
Data Layer 2: Estimated percent of all renters who are cost burdened between 2005-2009. Range: 0% - 33.93%.
Data Layer 3: Percent of population that received Food Stamps in July 2008. Range: 0.18% - 51.1%.

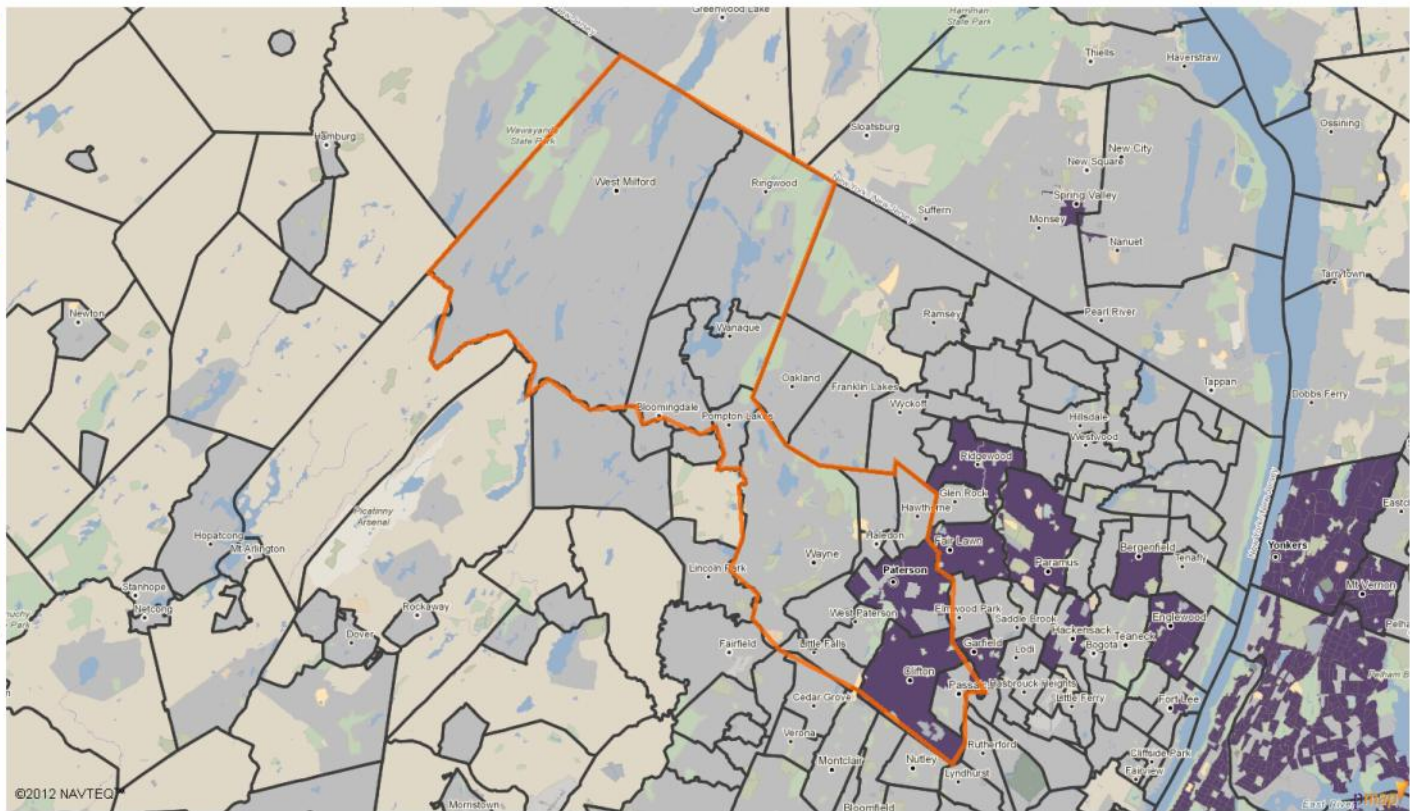


Custom PolicyMap Analytic of Passaic

Data Layer 1
Percent of all people over 5 who have a disability in 2000.
0% 100%
Shaded by: Census Tract
Source: Census

Data Layer 2
Percent of all people who are American Indian or Alaskan Native in 2010.
0% 100%
Shaded by: Census Tract
Source: Census

Data Layer 3
Unemployment rate in 2010.
2.7% 37.8%
Shaded by: City
Source: Bureau of Labor Statistics



Purple areas on the map meet all criteria below:
Data Layer 1: Percent of all people over 5 who have a disability in 2000. Range: 0% - 100%.
Data Layer 2: Percent of all people who are American Indian or Alaskan Native in 2010. Range: 0% - 100%.
Data Layer 3: Unemployment rate in 2010. Range: 2.7% - 37.8%.

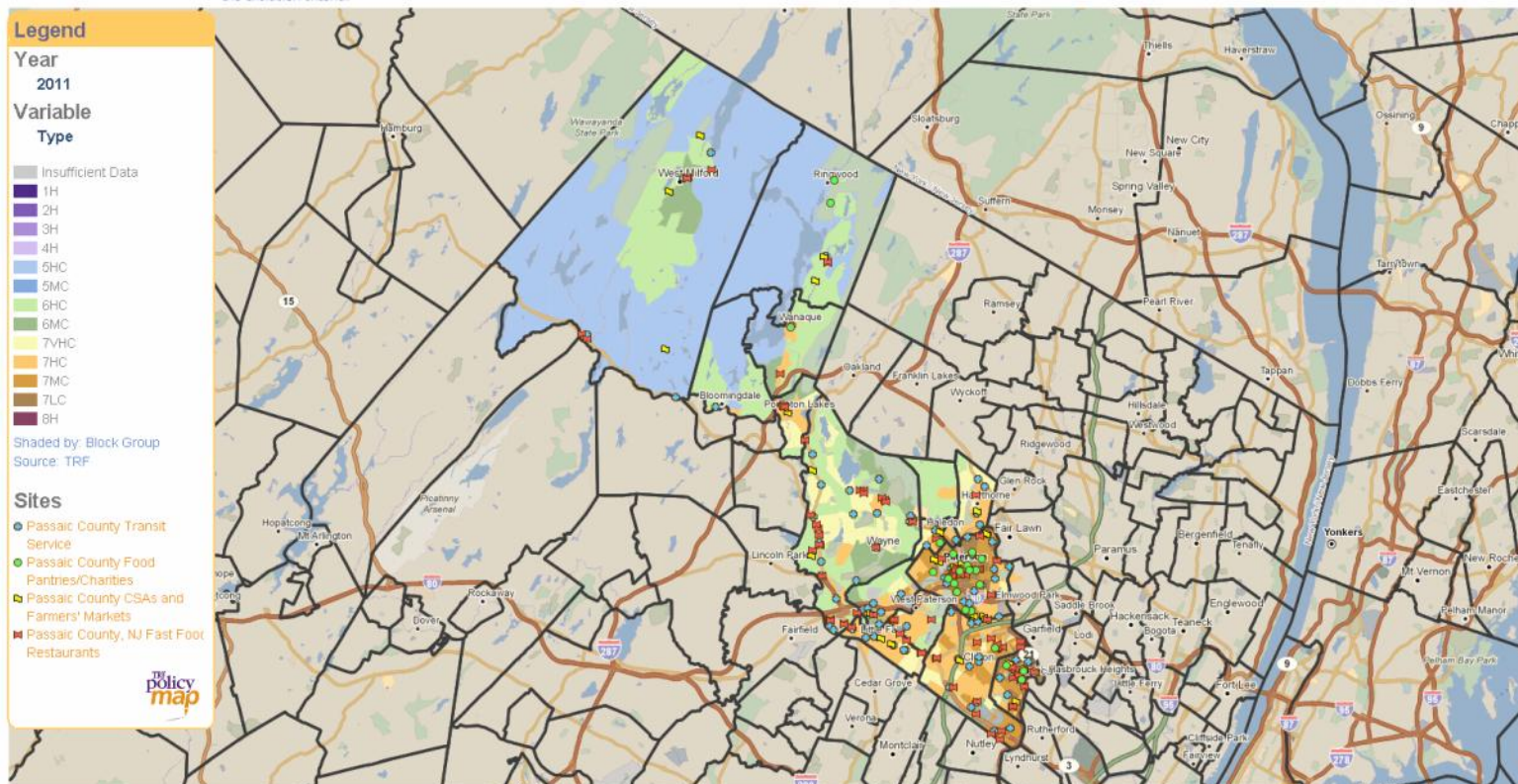




Map of Passaic County Transit Service, Passaic County Food Pantries/Charities, Passaic County CSAs and Farmers' Markets, Passaic County, NJ Fast Food Restaurants with Population/Car Ownership Classification (Population Density, % Car Ownership, Distance from Food Outlets in Miles), as of 2011.

Population/Car Ownership Classification, as of 2011.

TRF categorized all block groups in the continental US into categories using Census data for population density and car ownership rates. This process resulted in 12 categories ranging from: Density 1 (lowest density - high car ownership) to Density 7 (highest density - lowest car ownership). Areas designated as "insufficient data" were not included in the study. Please see the Data Directory for our methodology, for the family of LSA indicators, and for the exclusion criteria.



©2012 NAVTEQ™

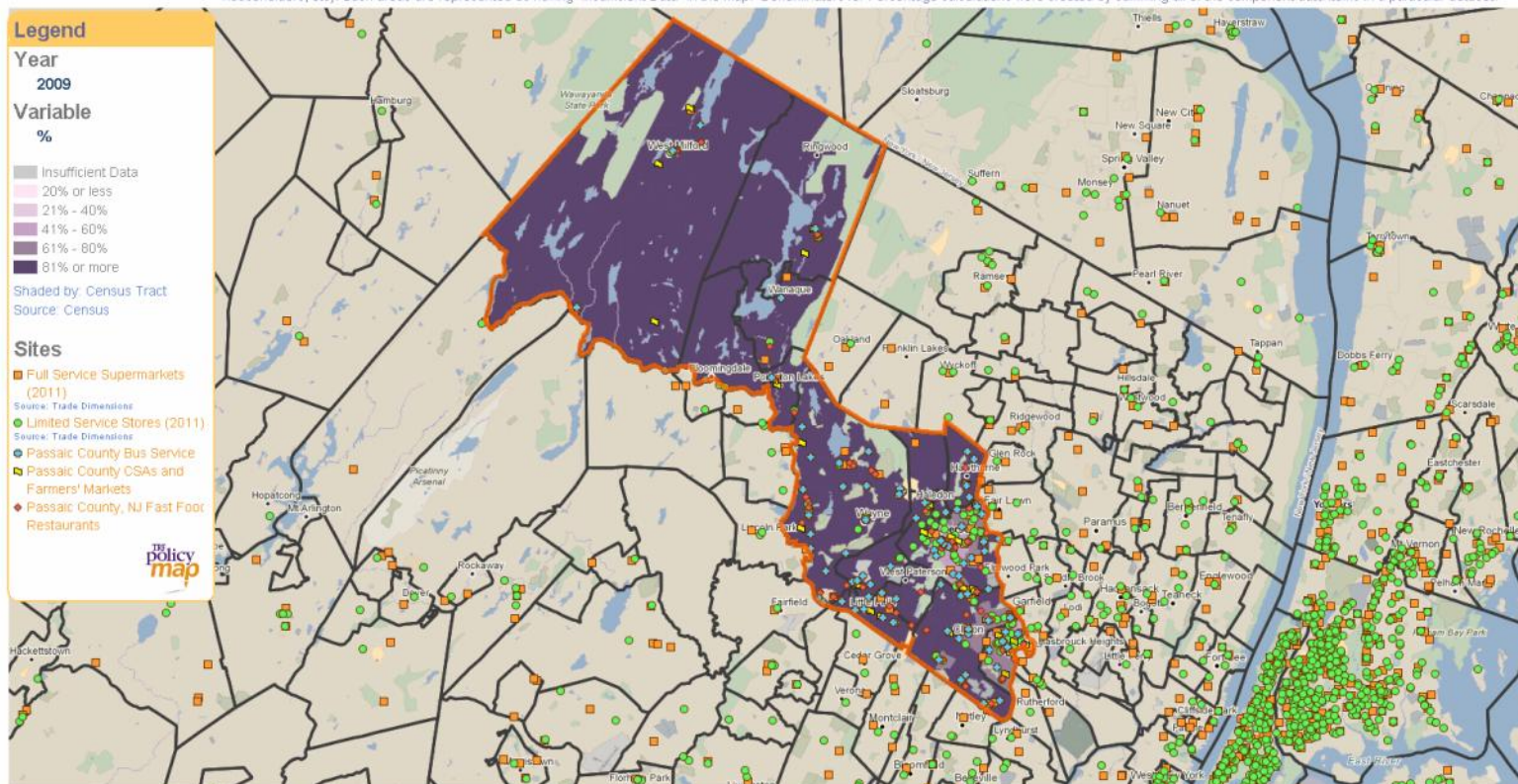




Map of Custom Region (Passaic County Municipalities) and Passaic with Full Service Supermarkets (2011), Limited Service Stores (2011), Passaic County Bus Service, Passaic County CSAs and Farmers' Markets, Passaic County, NJ Fast Food Restaurants and Estimated percent of workers who drove to work in 2005-2009.

Estimated percent of workers who drove to work in 2005-2009.

Estimated percent of workers age 16 years or older who did not work at home who commuted to work by motor vehicle in 2005-2009. The number of workers commuting by motor vehicle include those driving a car, truck or van alone and those taking car or van pool services to work. Percentage calculations were suppressed in cases where the denominator of the calculation was less than 10 of the unit that is being described (eg, households, people, householders, etc). Such areas are represented as having "Insufficient Data" in the map. Denominators for Percentage calculations were created by summing all of the component data items in a particular dataset.



©2012 NAVTEQ™

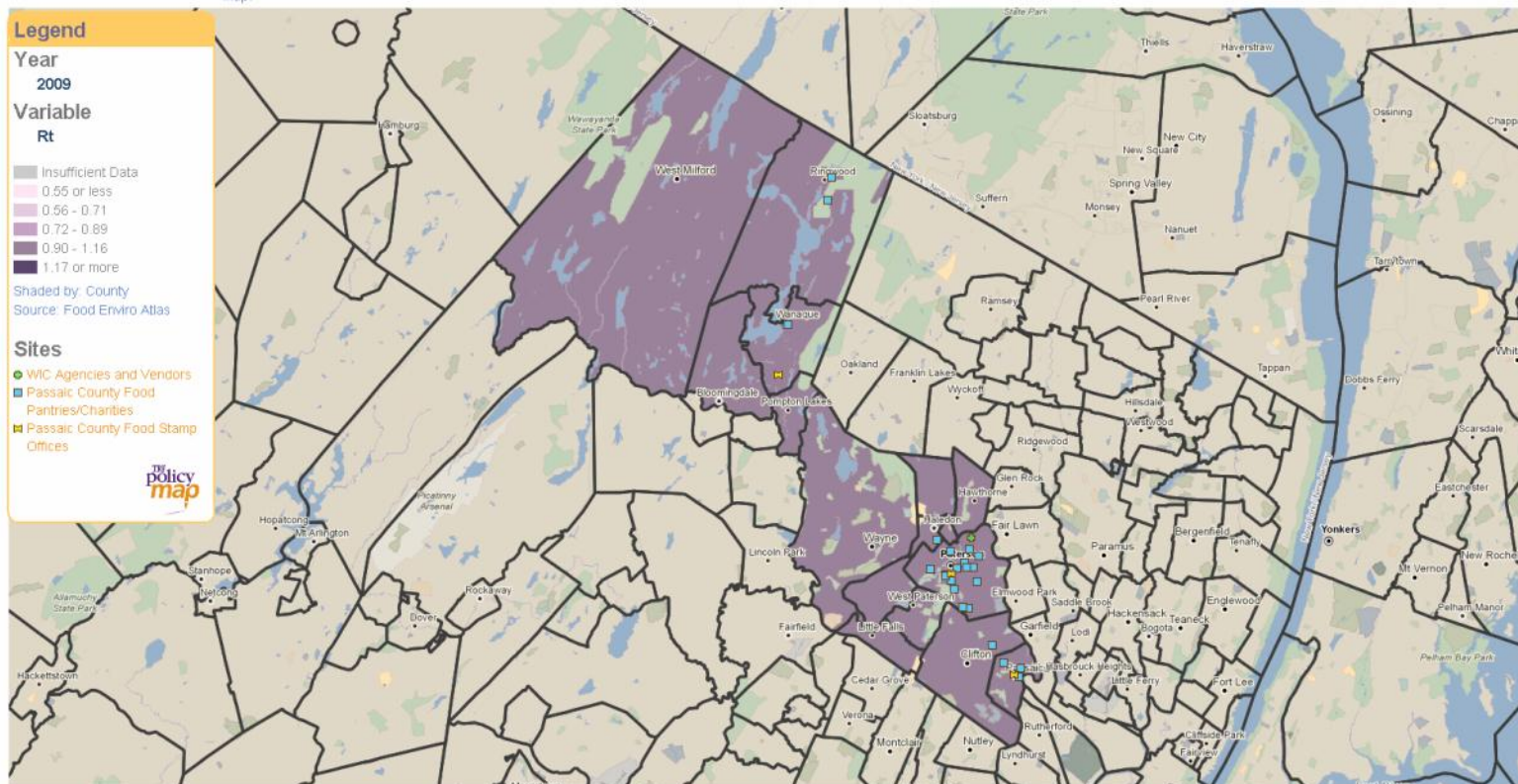




Map of Passaic with WIC Agencies and Vendors, Passaic County Food Pantries/Charities, Passaic County Food Stamp Offices with Number of SNAP-authorized stores per 1,000 population in 2009.

Number of SNAP-authorized stores per 1,000 population in 2009.

Number of stores authorized to accept the Supplemental Nutrition Assistance Program (SNAP), previously called the Food Stamp Program, per 1,000 people as of 2009. Store types include supermarkets, large, small and medium grocery stores, specialized foodstores and meal service providers. Data are reported by the U.S. Department of Agriculture (USDA) Food Environment Atlas. Areas where data are not available are labeled "Insufficient Data" on the map.

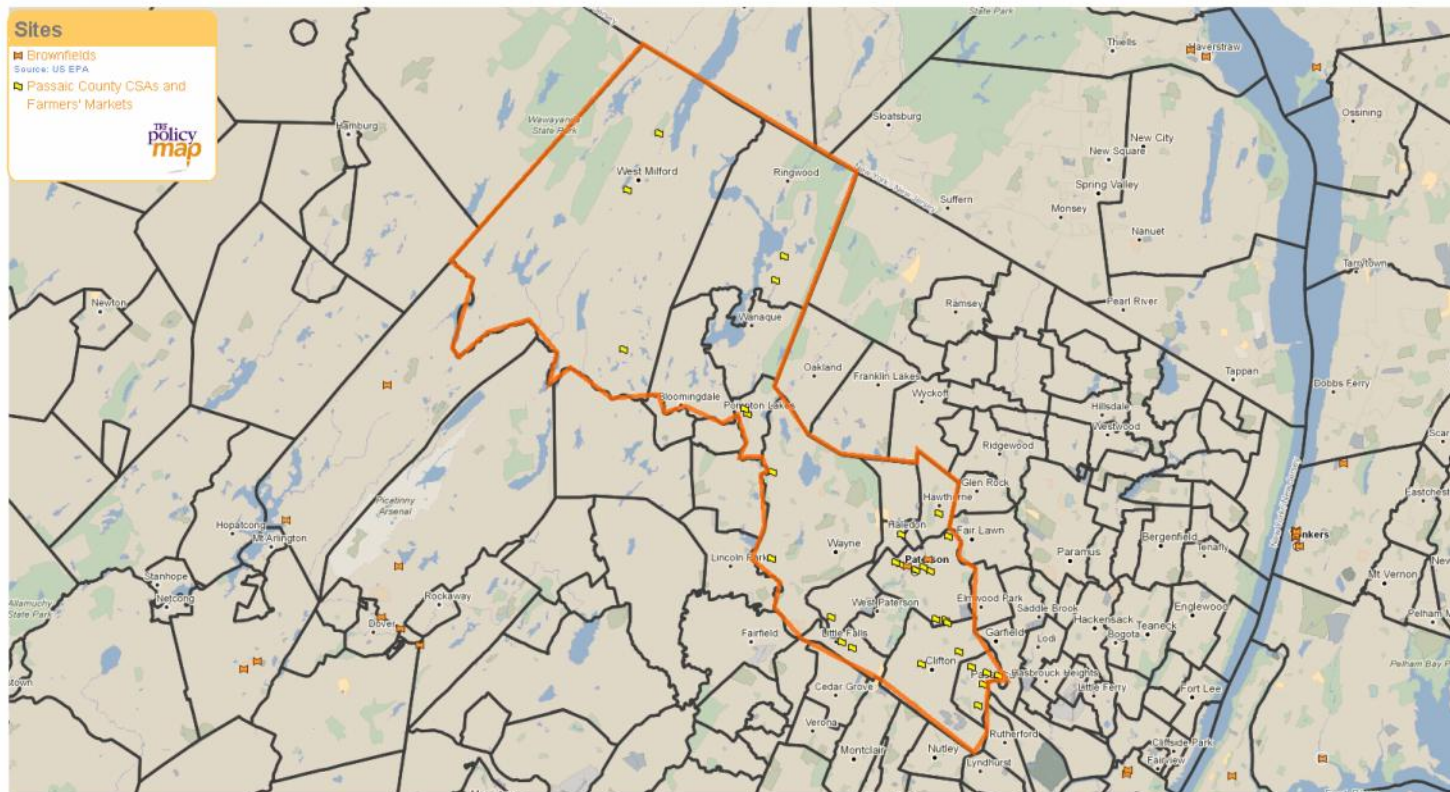


©2012 NAVTEQ™





Map of Passaic with Brownfields, Passaic County CSAs and Farmers' Markets

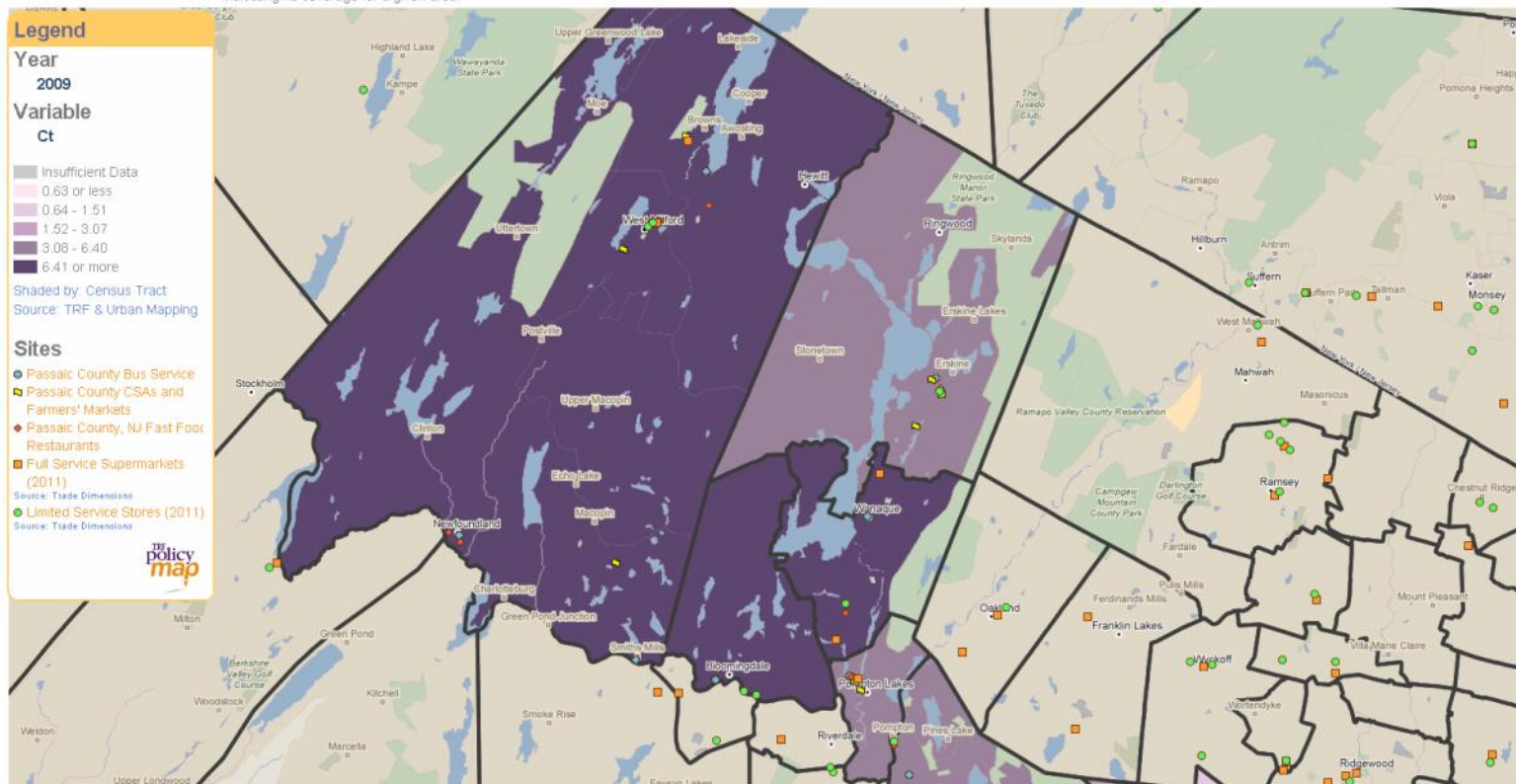




Map of Passaic with Full Service Supermarkets (2011), Limited Service Stores (2011), Passaic County Bus Service, Passaic County CSAs and Farmers' Markets, Passaic County, NJ Fast Food Restaurants and Distance to closest public transit rail stop in miles, as of 2009.

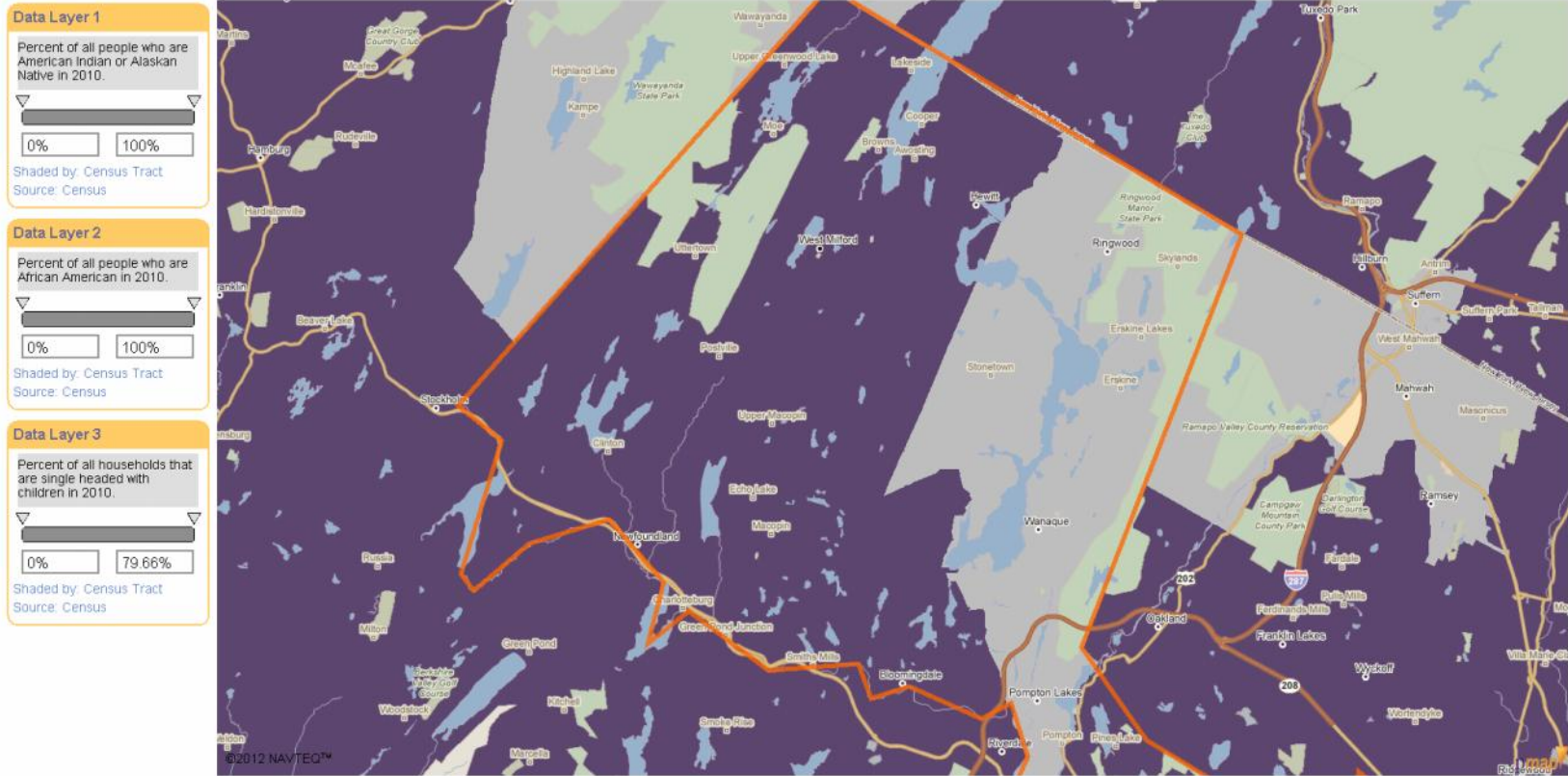
Distance to closest public transit rail stop in miles, as of 2009.

Distance to closest public transit rail stop in miles, as of 2009. Distance was calculated from the center point of the Census Tract. Public transit rail stops are taken from the Urban Mapping inventory of rail stops, as of March 2009. For more information about the geographic coverage of Urban Mapping data, see the Data Directory. Grey areas of the map are labeled as having Insufficient Data if they are more than fifteen miles from a rail stop, possibly indicating no coverage for a given area.





PolicyMap Analytic of Passaic County Native American and African-American Single-Parent Households



Purple areas on the map meet all criteria below:
Data Layer 1: Percent of all people who are American Indian or Alaskan Native in 2010. Range: 0% - 100%.
Data Layer 2: Percent of all people who are African American in 2010. Range: 0% - 100%.
Data Layer 3: Percent of all households that are single headed with children in 2010. Range: 0% - 79.66%.

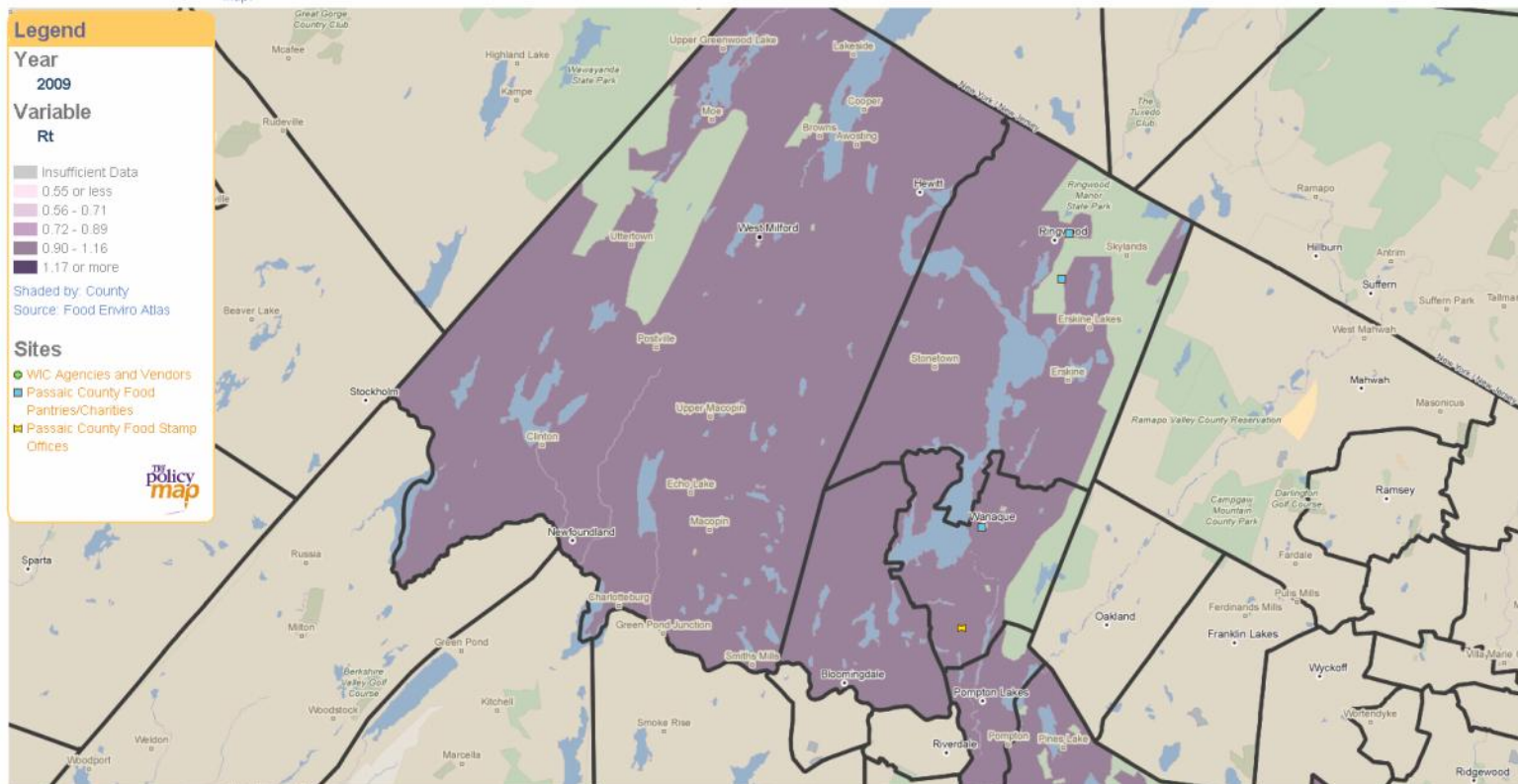




Map of Passaic with WIC Agencies and Vendors, Passaic County Food Pantries/Charities, Passaic County Food Stamp Offices with Number of SNAP-authorized stores per 1,000 population in 2009.

Number of SNAP-authorized stores per 1,000 population in 2009.

Number of stores authorized to accept the Supplemental Nutrition Assistance Program (SNAP), previously called the Food Stamp Program, per 1,000 people as of 2009. Store types include supermarkets, large, small and medium grocery stores, specialized foodstores and meal service providers. Data are reported by the U.S. Department of Agriculture (USDA) Food Environment Atlas. Areas where data are not available are labeled "Insufficient Data" on the map.

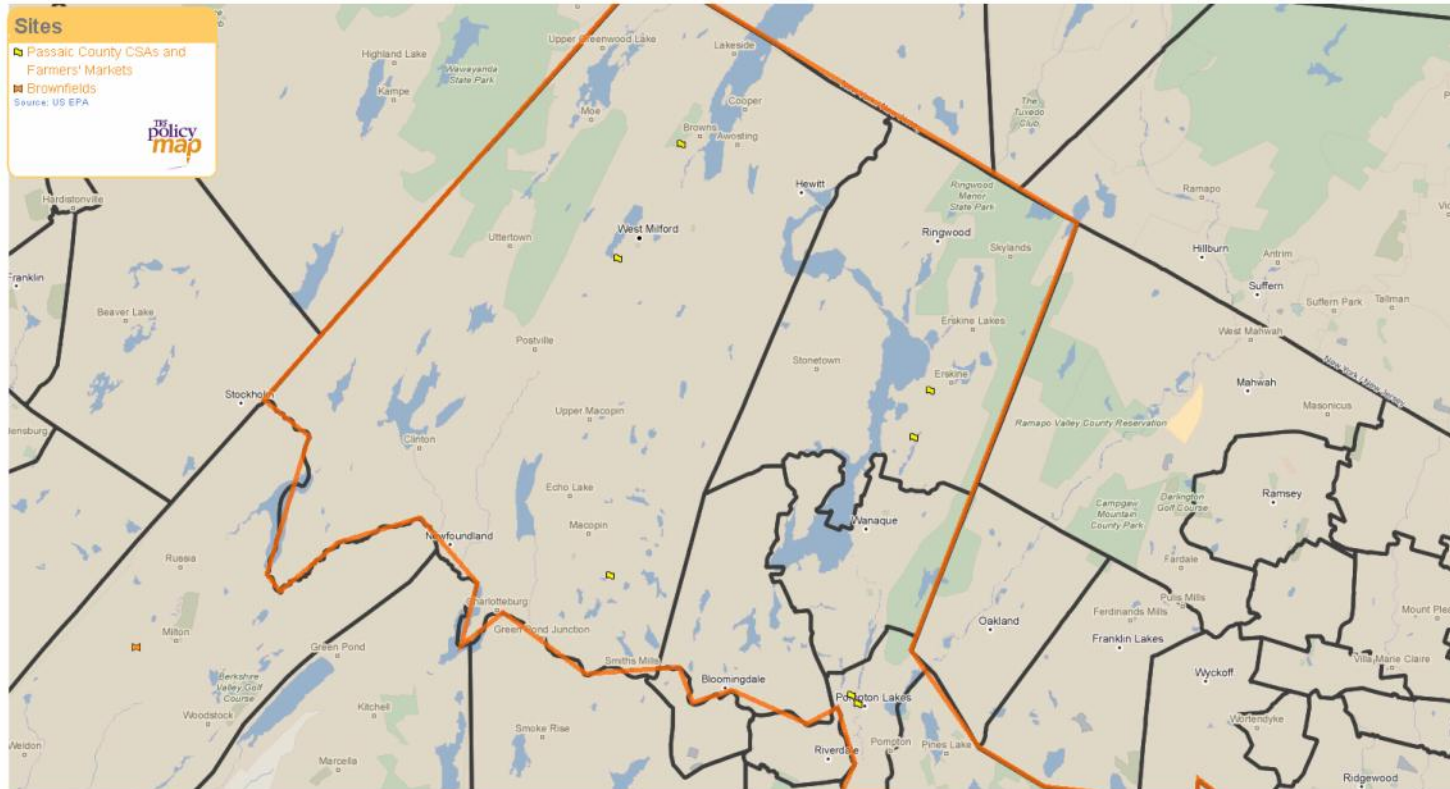


©2012 NAVTEQ™





Map of Passaic with Brownfields, Passaic County CSAs and Farmers' Markets





Custom PolicyMap Analytic of Passaic

Data Layer 1

Unemployment rate in 2010.

2.7% | 37.8%

Shaded by: City
Source: Bureau of Labor Statistics

Data Layer 2

Estimated percent of all families that live in poverty between 2005-2009.

7.74% | 50.6%

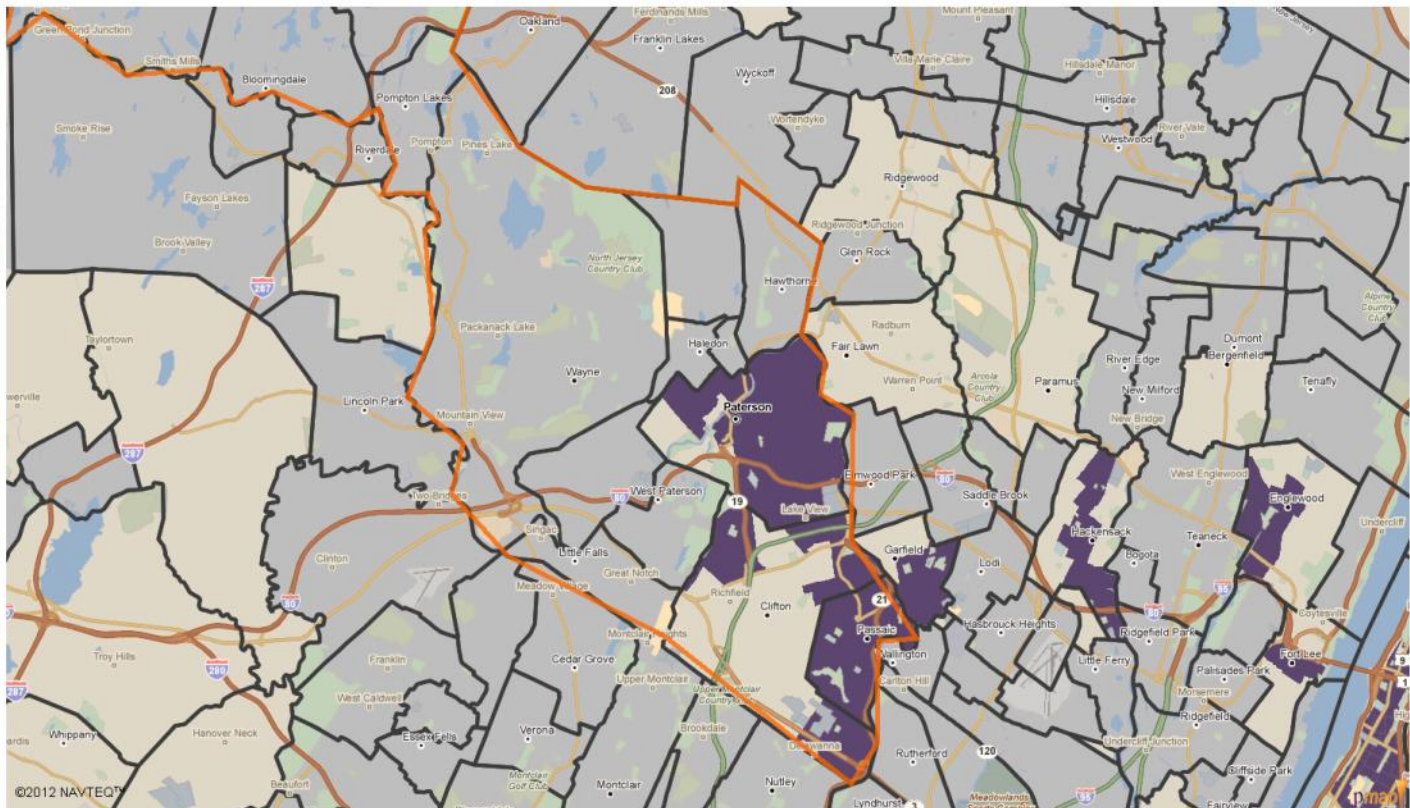
Shaded by: Census Tract
Source: Census

Data Layer 3

Total WIC redemptions as of 2009.

\$0 | \$341,197,173

Shaded by: County
Source: Food Enviro Atlas



Purple areas on the map meet all criteria below:

Data Layer 1: Unemployment rate in 2010. Range: 2.7% - 37.8%.

Data Layer 2: Estimated percent of all families that live in poverty between 2005-2009. Range: 7.74% - 50.6%.

Data Layer 3: Total WIC redemptions as of 2009. Range: \$0 - \$341,197,173.73.





Custom PolicyMap Analytic of Passaic

Data Layer 1

Unemployment rate in 2010.

7.31% 37.8%

Shaded by: City
Source: Bureau of Labor Statistics

Data Layer 2

Percent of all people over 5 who have a disability in 2000.

10.12% 99.4%

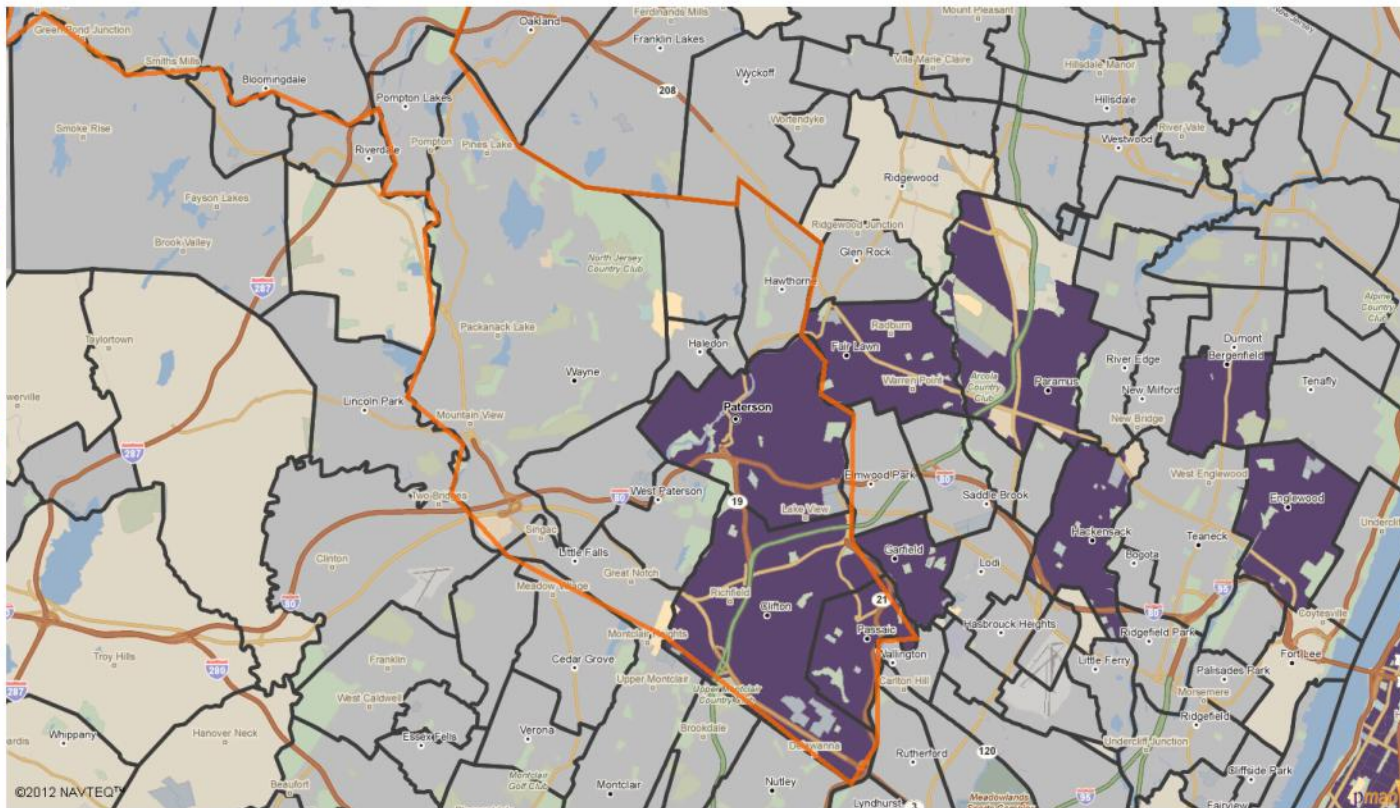
Shaded by: Census Tract
Source: Census

Data Layer 3

Of all people who received green cards in FY2010, the percent residing in each state.

4.99% 19.95%

Shaded by: State
Source: Department of Homeland Security



Purple areas on the map meet all criteria below:

Data Layer 1: Unemployment rate in 2010. Range: 7.31% - 37.8%.

Data Layer 2: Percent of all people over 5 who have a disability in 2000. Range: 10.12% - 99.4%.

Data Layer 3: Of all people who received green cards in FY2010, the percent residing in each state. Range: 4.99% - 19.95%.

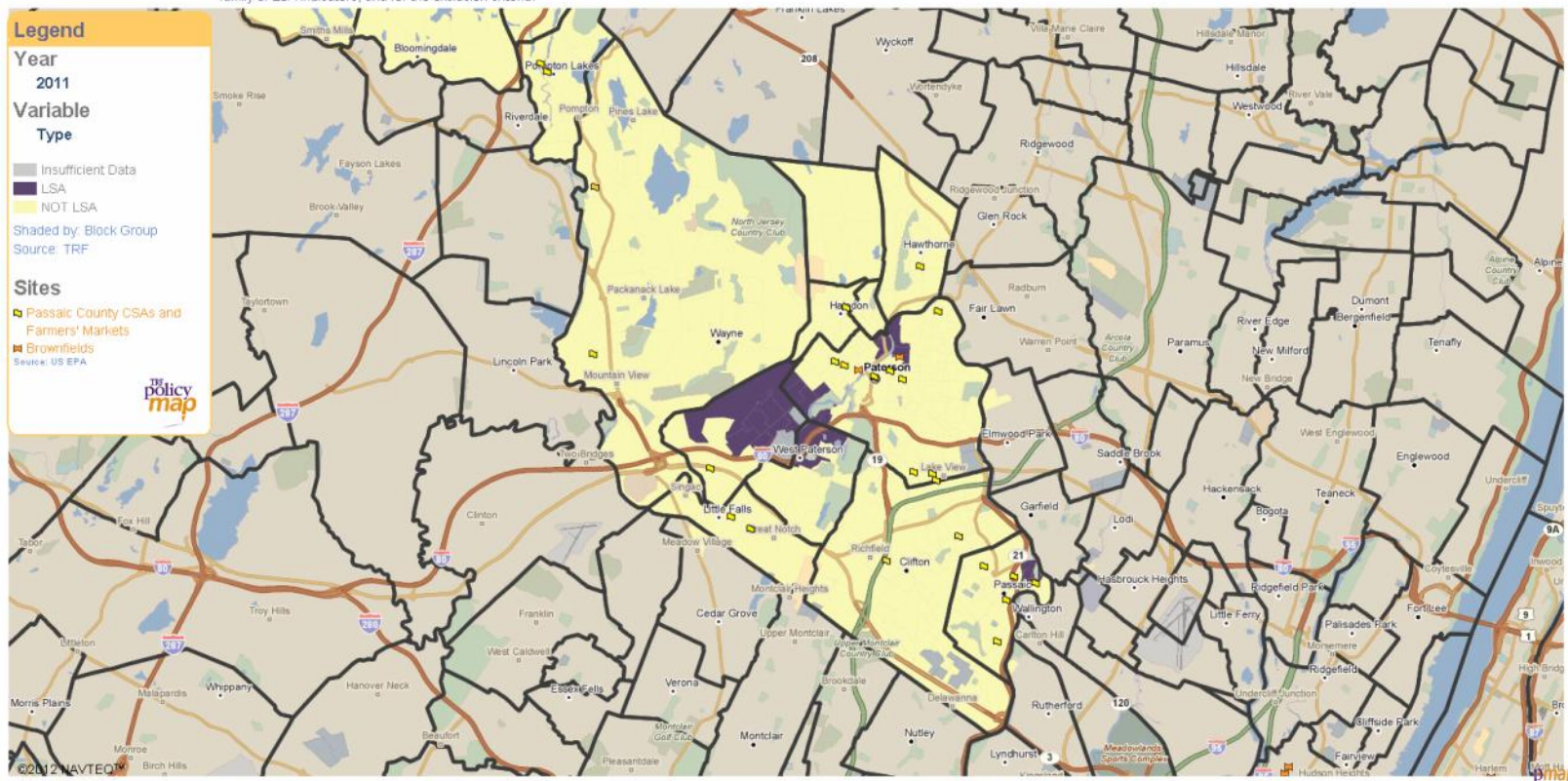




Map of Passaic with Brownfields, Passaic County CSAs and Farmers' Markets and Limited Supermarket Access (LSA) status, as of 2011.

Limited Supermarket Access (LSA) status, as of 2011.

All block groups included in the Limited Supermarket Access Study are designated as either "LSA" (within a Limited Supermarket Access) or "Not LSA" (not within a Limited Supermarket Access) according to TRF's analysis. TRF's methodology is designed to identify areas where residents travel longer distances to reach supermarkets when compared to the benchmark (average) distance traveled by residents of non-low/moderate income areas. Comparative areas are grouped based on similar values for population density and car ownership rates. The data sources include US Census (2010) for population living in households, residential land area, US Census ACS data (2005-2009) for car ownership rates, and Trade Dimensions (2011) data for supermarket locations. Areas designated as "Insufficient Data" were not included in the study. Please see the Data Directory for our methodology, for the family of LSA indicators, and for the exclusion criteria.





PolicyMap Analytic of Passaic County with African-American Population/Per Capita Income Below 200% of the Poverty Level receiving Food Stamp Benefits

Data Layer 1

Percent of all people who are African American in 2010.

0% 100%

Shaded by: Census Tract
Source: Census

Data Layer 2

Estimated per capita income between 2005-2009.

\$0 \$33,962

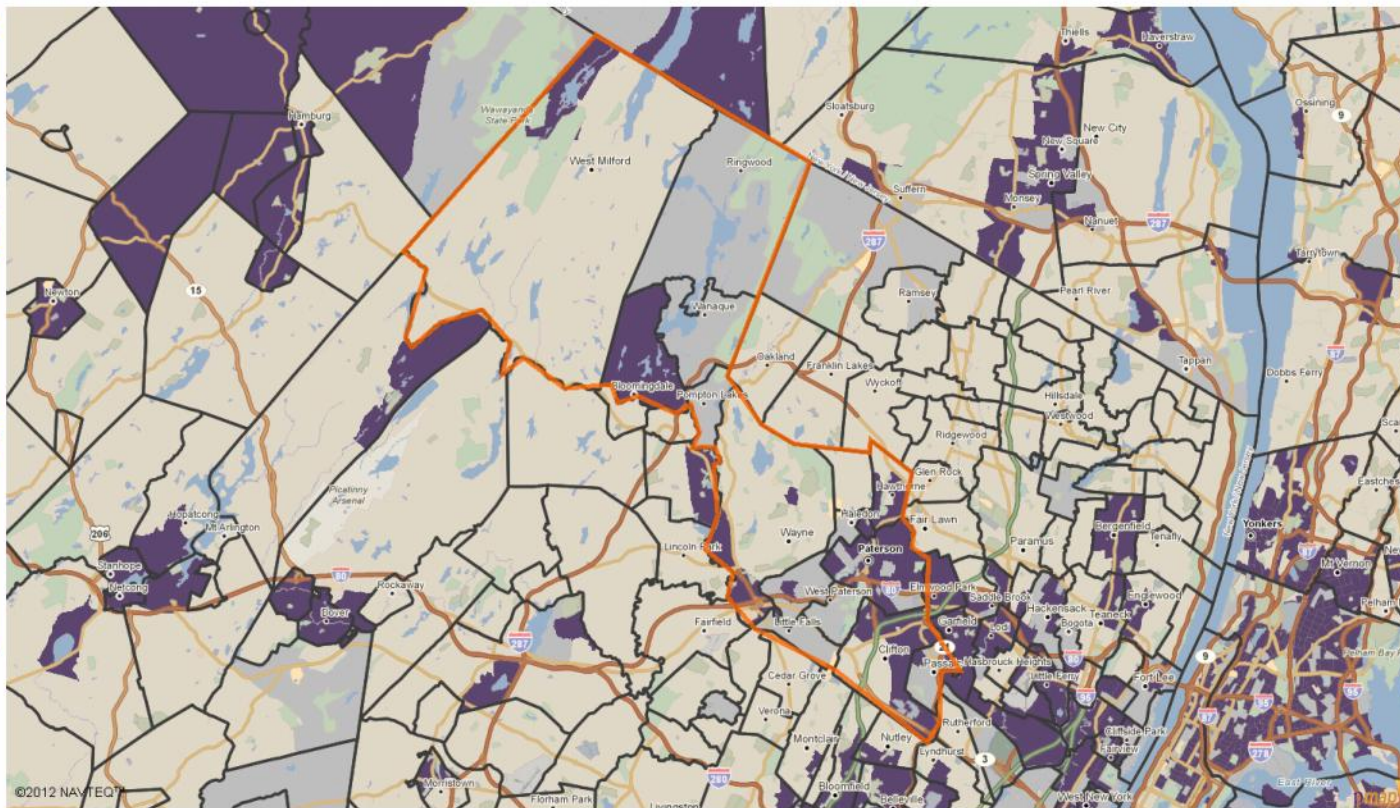
Shaded by: Census Tract
Source: Census

Data Layer 3

Percent of population that received Food Stamps in July 2008.

0.18% 51.1%

Shaded by: County
Source: SAIFE & Census Pop Estimates



Purple areas on the map meet all criteria below:
Data Layer 1: Percent of all people who are African American in 2010. Range: 0% - 100%.
Data Layer 2: Estimated per capita income between 2005-2009. Range: \$0 - \$33,962.
Data Layer 3: Percent of population that received Food Stamps in July 2008. Range: 0.18% - 51.1%.





PolicyMap Analytic of Passaic County with Hispanic Population/Per Capita Income Below 200% of the Poverty Level/Receiving WIC Benefits

Data Layer 1

Percent of all people who are Hispanic in 2010.

0% 100%

Shaded by: Census Tract
Source: Census

Data Layer 2

Estimated per capita income between 2005-2009.

\$0 \$33,962

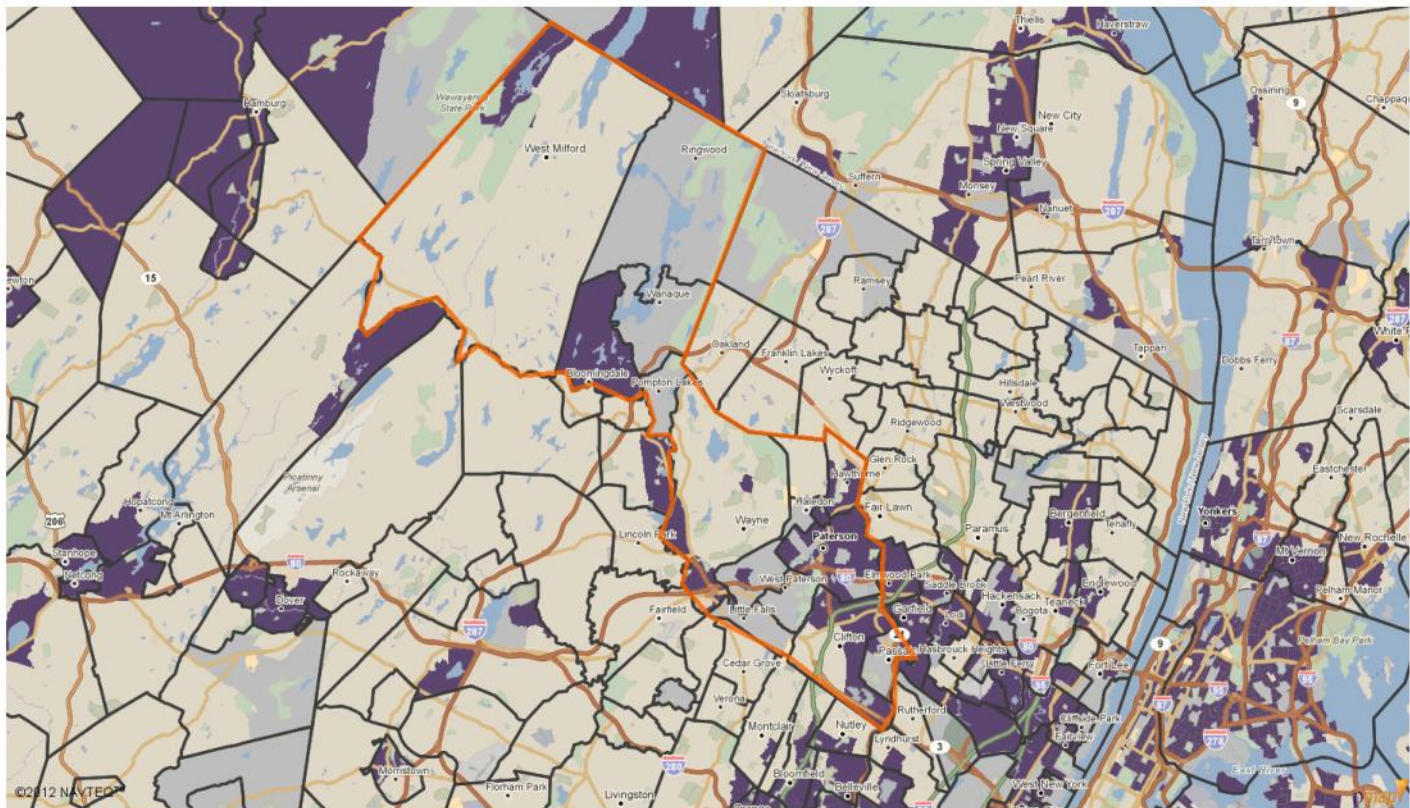
Shaded by: Census Tract
Source: Census

Data Layer 3

Total WIC redemptions as of 2009.

\$0 \$341,197,173

Shaded by: County
Source: Food Enviro Atlas



Purple areas on the map meet all criteria below:
Data Layer 1: Percent of all people who are Hispanic in 2010. Range: 0% - 100%.
Data Layer 2: Estimated per capita income between 2005-2009. Range: \$0 - \$33,962.
Data Layer 3: Total WIC redemptions as of 2009. Range: \$0 - \$341,197,173.73.



PolicyMap Analytic of Passaic County Transit Service with Native American Population and Per Capita Income below 200% of the Poverty Level

Data Layer 1

Percent of all people who are American Indian or Alaskan Native in 2010.

0% 100%

Shaded by: Census Tract
Source: Census

Data Layer 2

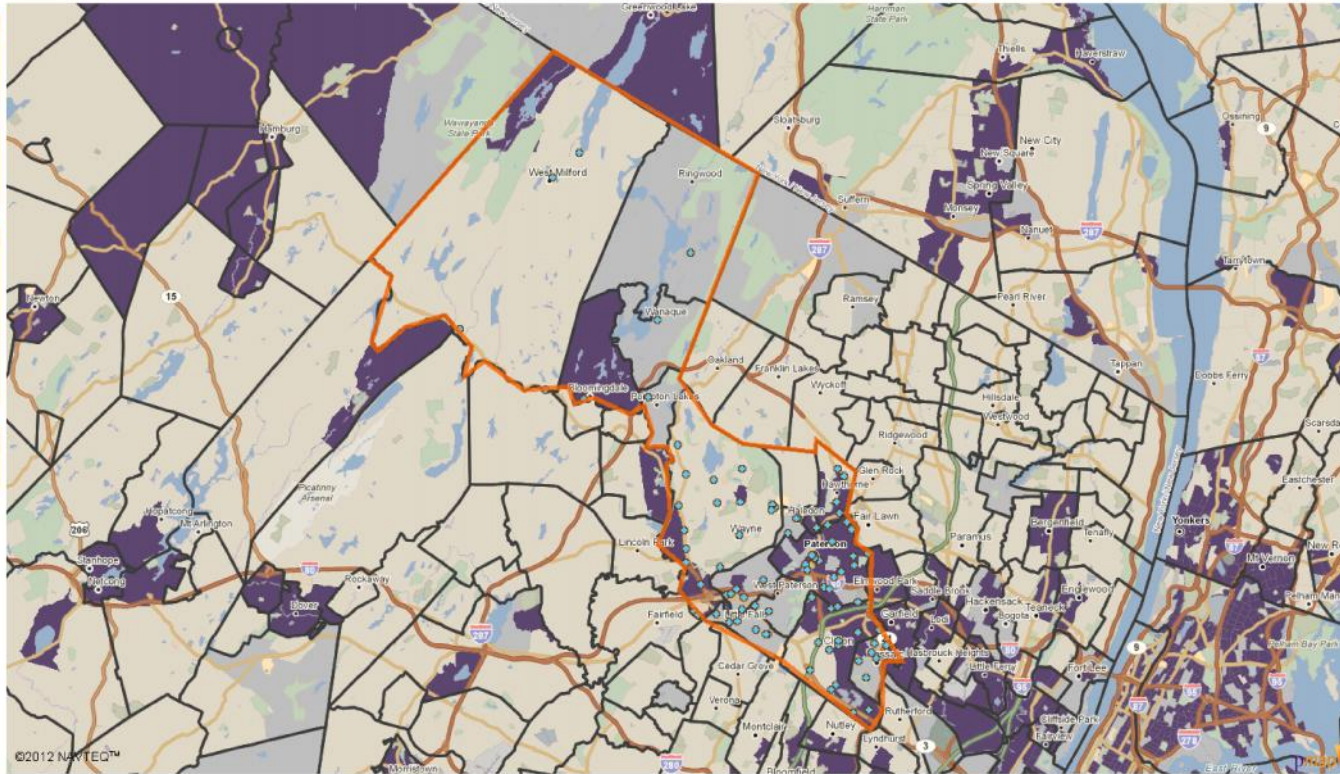
Estimated per capita income between 2005-2009.

\$0 \$33,962

Shaded by: Census Tract
Source: Census

Sites

- Passaic County Transit Service



Purple areas on the map meet all criteria below:
Data Layer 1: Percent of all people who are American Indian or Alaskan Native in 2010. Range: 0% - 100%.
Data Layer 2: Estimated per capita income between 2005-2009. Range: \$0 - \$33,962.





PolicyMap Analytic of Passaic County Unemployed with Per Capita Income Below 200% of the Poverty Level receiving Food Stamp Benefits

Data Layer 1

Unemployment rate in 2010.

2.7% 37.8%

Shaded by: City
Source: Bureau of Labor Statistics

Data Layer 2

Estimated per capita income between 2005-2009.

\$0 \$33,962

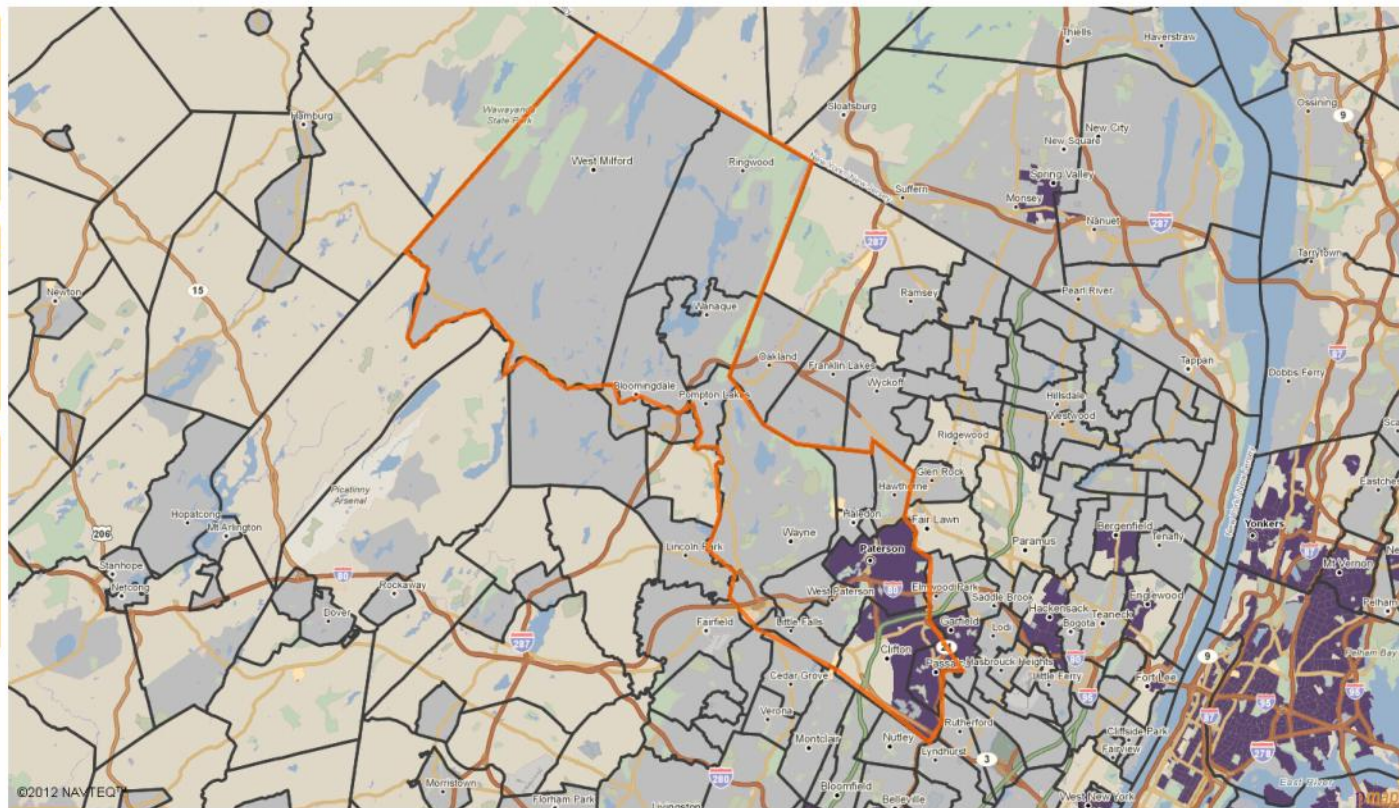
Shaded by: Census Tract
Source: Census

Data Layer 3

Percent of population that received Food Stamps in July 2008.

0.18% 51.1%

Shaded by: County
Source: SAIFE & Census Pop Estimates



Purple areas on the map meet all criteria below:

Data Layer 1: Unemployment rate in 2010. Range: 2.7% - 37.8%.

Data Layer 2: Estimated per capita income between 2005-2009. Range: \$0 - \$33,962.

Data Layer 3: Percent of population that received Food Stamps in July 2008. Range: 0.18% - 51.1%.





PolicyMap Analytic of Passaic County population with disabilities below 200% of the Poverty Level receiving SSI Benefits

Data Layer 1

Percent of all people over 5 who have a disability in 2000.

0% 100%

Shaded by: Census Tract
Source: Census

Data Layer 2

Estimated per capita income between 2005-2009.

\$0 \$33,962

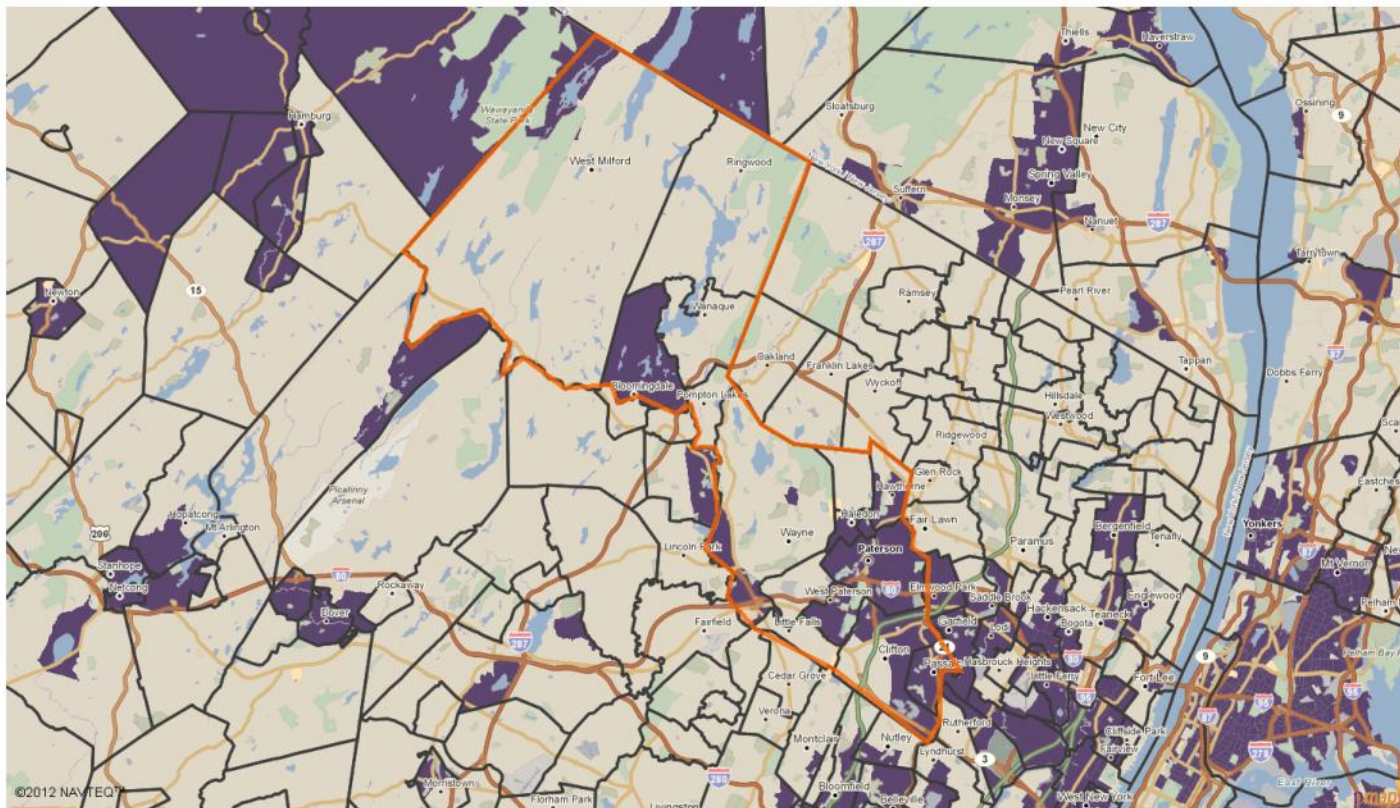
Shaded by: Census Tract
Source: Census

Data Layer 3

Estimated aggregate social security income of a household between 2005-2009.

\$900 \$164,182.80

Shaded by: Census Tract
Source: Census



Purple areas on the map meet all criteria below:
Data Layer 1: Percent of all people over 5 who have a disability in 2000. Range: 0% - 100%.
Data Layer 2: Estimated per capita income between 2005-2009. Range: \$0 - \$33,962.
Data Layer 3: Estimated aggregate social security income of a household between 2005-2009. Range: \$900 - \$164,182,800.





PolicyMap Analytic of Passaic County Recent Immigrants Learning English with Per Capita Income Below 200% of the Poverty Level

Data Layer 1

Of all people who received green cards in FY2010, the percent residing in each state.

0.04% 19.99%

Shaded by: State
Source: Department of Homeland Security

Data Layer 2

Estimated per capita income between 2005-2009.

\$0 \$33,962

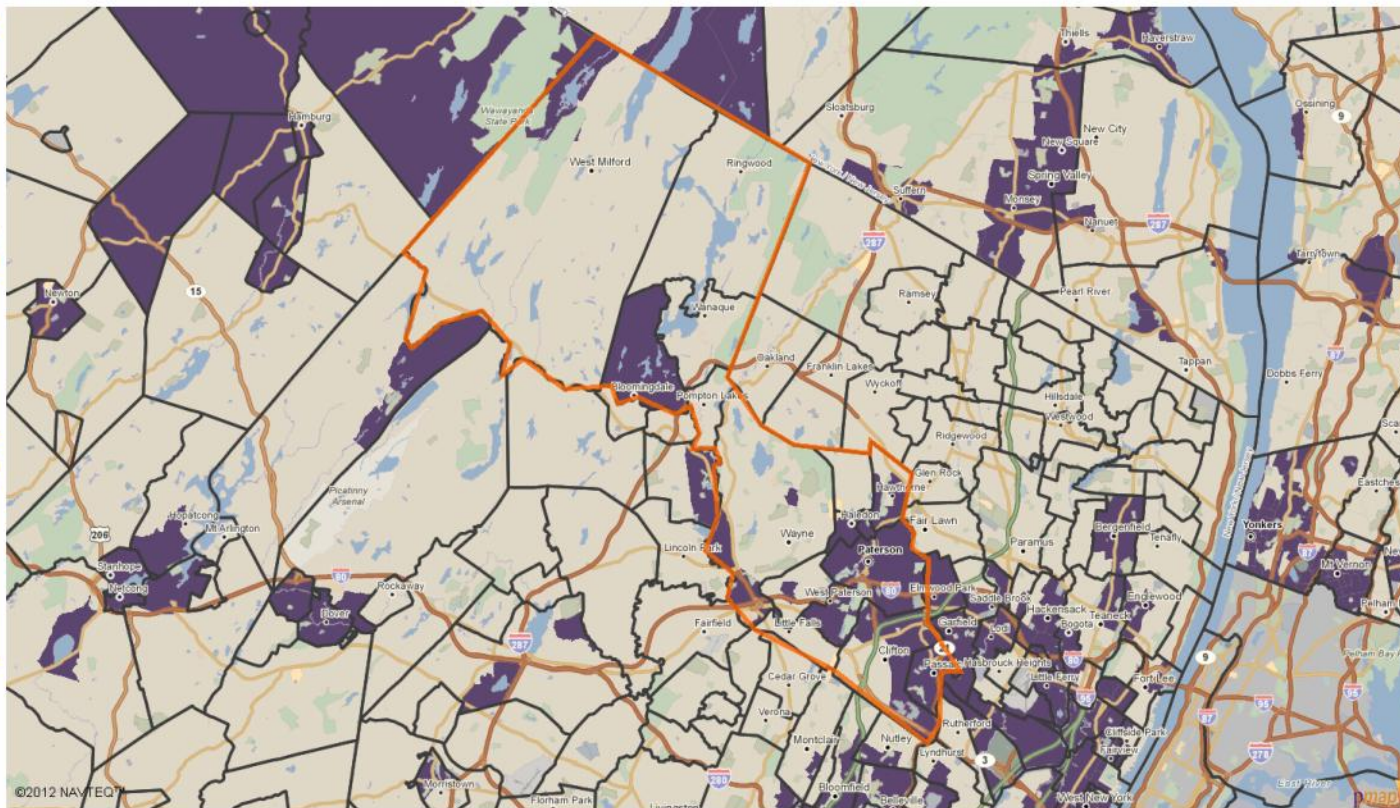
Shaded by: Census Tract
Source: Census

Data Layer 3

Percent of students who were English Language Learners (ELL) in 2009-10.

0% 100%

Shaded by: School District
Source: NCES CCD



Purple areas on the map meet all criteria below:

Data Layer 1: Of all people who received green cards in FY2010, the percent residing in each state. Range: 0.04% - 19.99%.

Data Layer 2: Estimated per capita income between 2005-2009. Range: \$0 - \$33,962.

Data Layer 3: Percent of students who were English Language Learners (ELL) in 2009-10. Range: 0% - 100%.





PolicyMap Analytic of Passaic County Single-Parent Households Receiving WIC Benefits and Free/Reduced-Price School Lunches

Data Layer 1

Percent of all households that are single headed with children in 2010.

0% 79.66%

Shaded by: Census Tract
Source: Census

Data Layer 2

The percentage of students that are Free and Reduced Price lunch recipients in 2009.

16.01% 99.59%

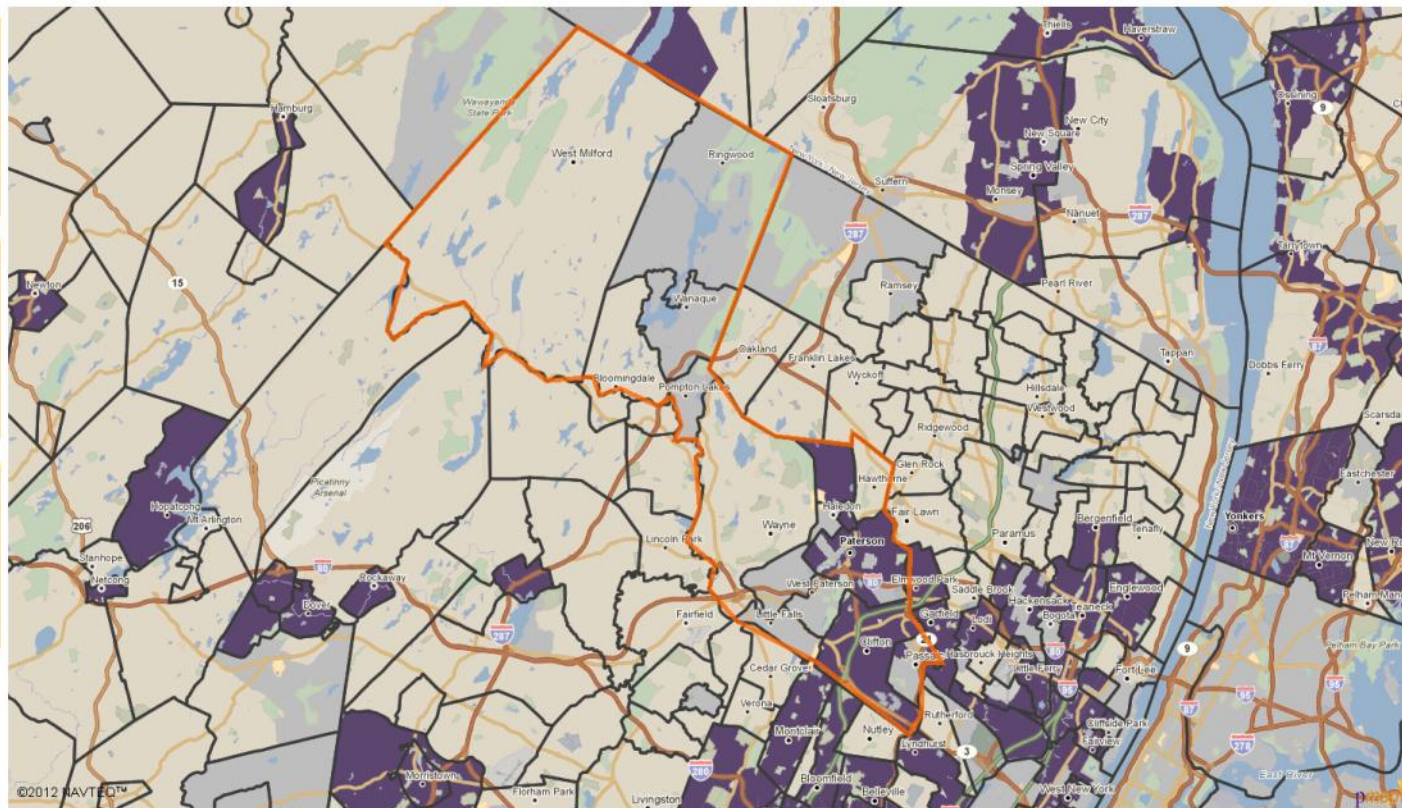
Shaded by: School District
Source: NCES CCD

Data Layer 3

Total WIC redemptions as of 2009.

\$0 \$341,197,7

Shaded by: County
Source: Food Enviro Atlas



Purple areas on the map meet all criteria below:

Data Layer 1: Percent of all households that are single headed with children in 2010. Range: 0% - 79.66%.

Data Layer 2: The percentage of students that are Free and Reduced Price lunch recipients in 2009. Range: 16.01% - 99.59%.

Data Layer 3: Total WIC redemptions as of 2009. Range: \$0 - \$341,197,73.





PolicyMap Analytic of Passaic County Elderly Disabled Living Alone

Data Layer 1

Percent of all people 65 or older in 2010.

0% 85.65%

Shaded by: Census Tract
Source: Census

Data Layer 2

Number of people 65 or older with a disability in 2000.

0 3,547

Shaded by: Census Tract
Source: Census

Data Layer 3

Number of 1-person households in 2010.

0 5,276

Shaded by: Census Tract
Source: Census



Purple areas on the map meet all criteria below:

Data Layer 1: Percent of all people 65 or older in 2010. Range: 0% - 85.65%.

Data Layer 2: Number of people 65 or older with a disability in 2000. Range: 0 - 3,547.

Data Layer 3: Number of 1-person households in 2010. Range: 0 - 5,276.





PolicyMap Analytic of Passaic County Religious Observers Receiving Green Cards in FY2010 Learning English

Data Layer 1

Rate of adherence to all denominations per 1,000 people in 2000.

20.15 | 1,861.47

Shaded by: County
Source: RCMS

Data Layer 2

Of all people who received green cards in FY2010, the percent residing in each state.

0.04% | 19.99%

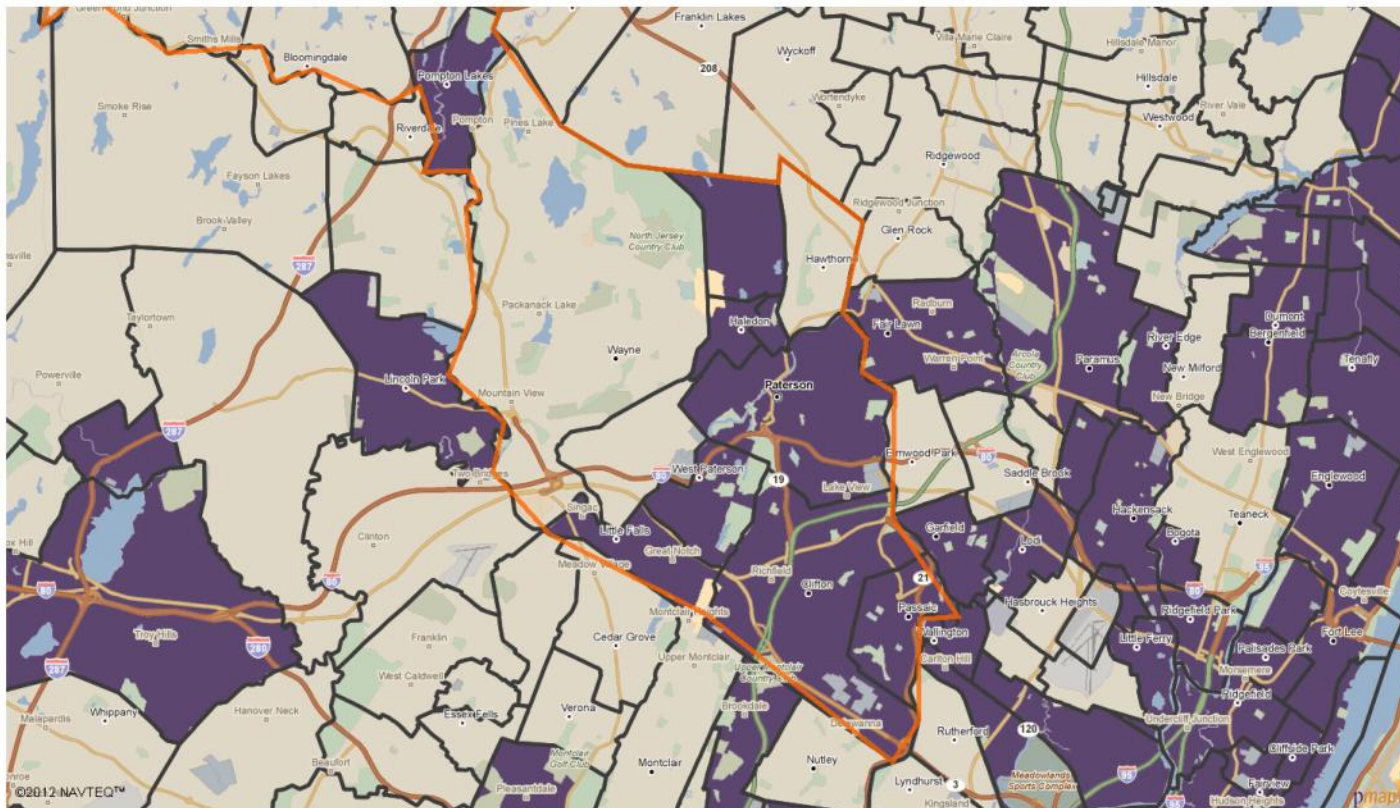
Shaded by: State
Source: Department of Homeland Security

Data Layer 3

Percent of students who were English Language Learners (ELL) in 2009-10.

2.98% | 100%

Shaded by: School District
Source: NCES CCD



Purple areas on the map meet all criteria below:

Data Layer 1: Rate of adherence to all denominations per 1,000 people in 2000. Range: 20.15 - 1,861.47.

Data Layer 2: Of all people who received green cards in FY2010, the percent residing in each state. Range: 0.04% - 19.99%.

Data Layer 3: Percent of students who were English Language Learners (ELL) in 2009-10. Range: 2.98% - 100%.

